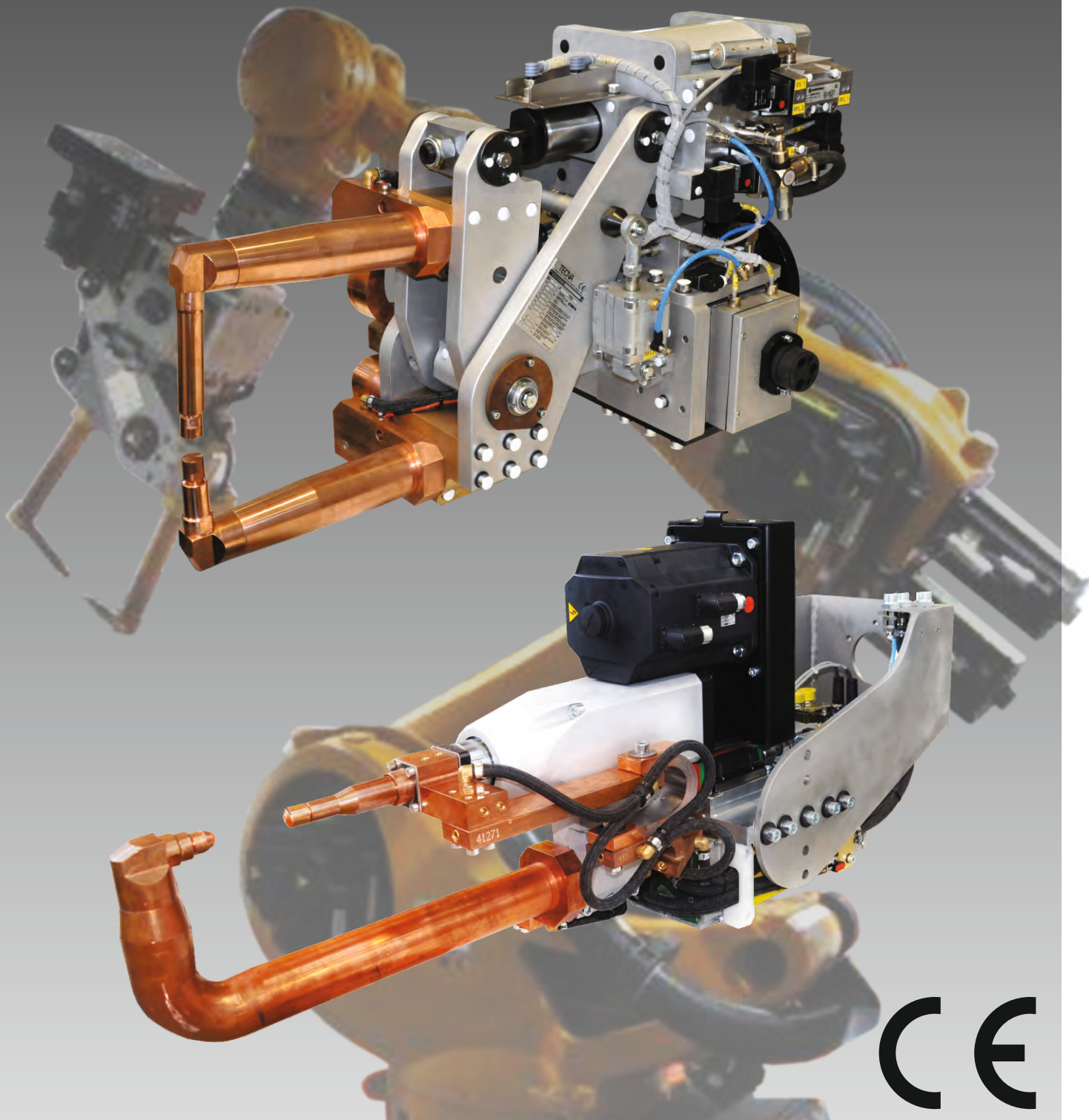


TECNA[®]



CE

PINZE DI SALDATURA PER ROBOT
WELDING GUNS FOR ROBOTS
SCHWEISSZANGEN FÜR ROBOTER

TECNA[®]

2915



TRASFORMATORE DI POTENZA
POWER TRANSFORMERS
LEISTUNGSTRANSFORMATOREN

	POWER	*WEIGHT
	32 kVA	21 kg
MONOFASE	36 kVA	23 kg
SINGLE-PHASE	54 kVA	32 kg
EINPHASEN	60 kVA	35 kg
	75 kVA	41 kg
MEDIA FREQUENZA	56 kVA	16 kg
MEDIUM FREQUENCY	90 kVA	29 kg
MITTELFREQUENZ		

Per i dati tecnici dei trasformatori vedi pagina 6.

For the technical features of the transformers, please, refer to page 6.

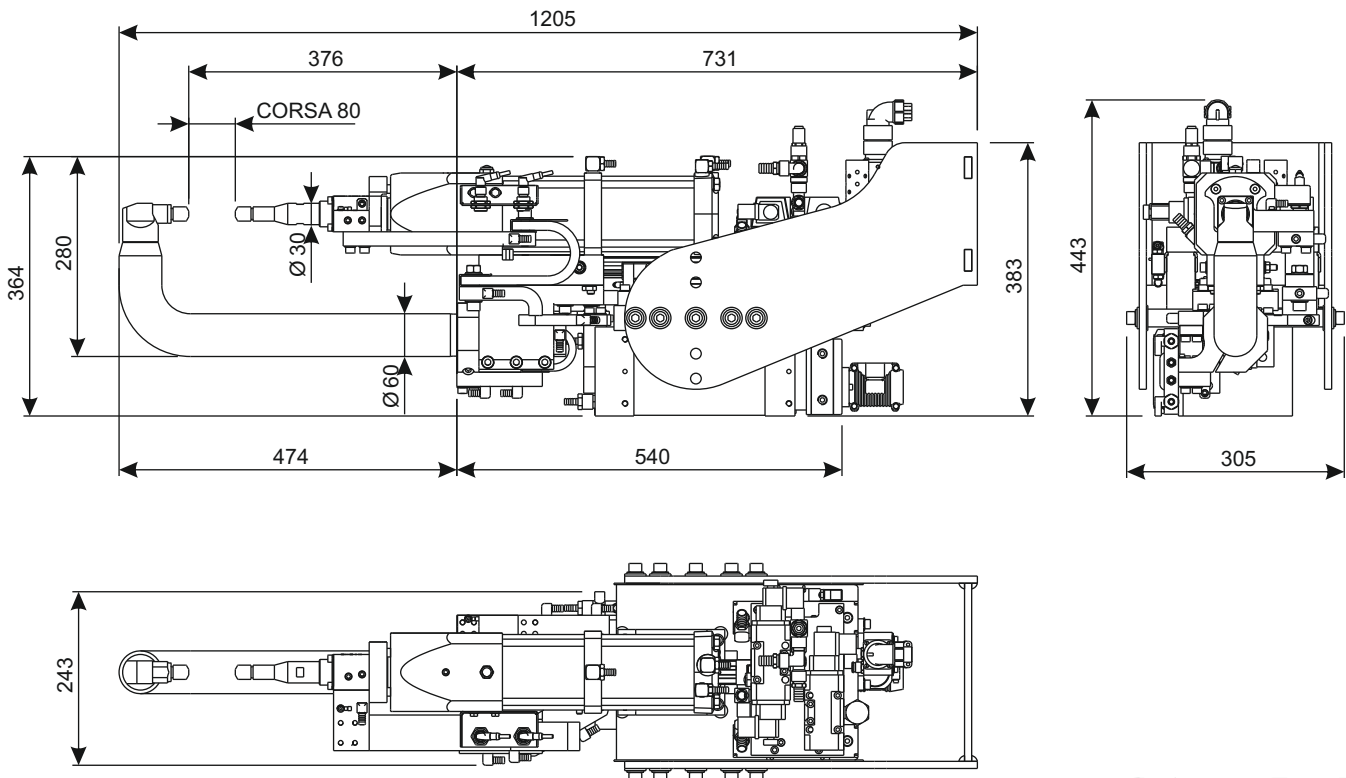
Technische Daten der Transformatoren finden Sie auf Seite 6.

Il peso delle pinze è inteso senza bracci, senza polso di supporto e senza (*)trasformatore di potenza.

The weight of the guns is meant without arms, without arm fitting and without (*)power transformer.

Das Gewicht der Zangen ist ohne Arme, ohne Handgelenk und ohne (*)Leistungstransformator zu meinen.

2915

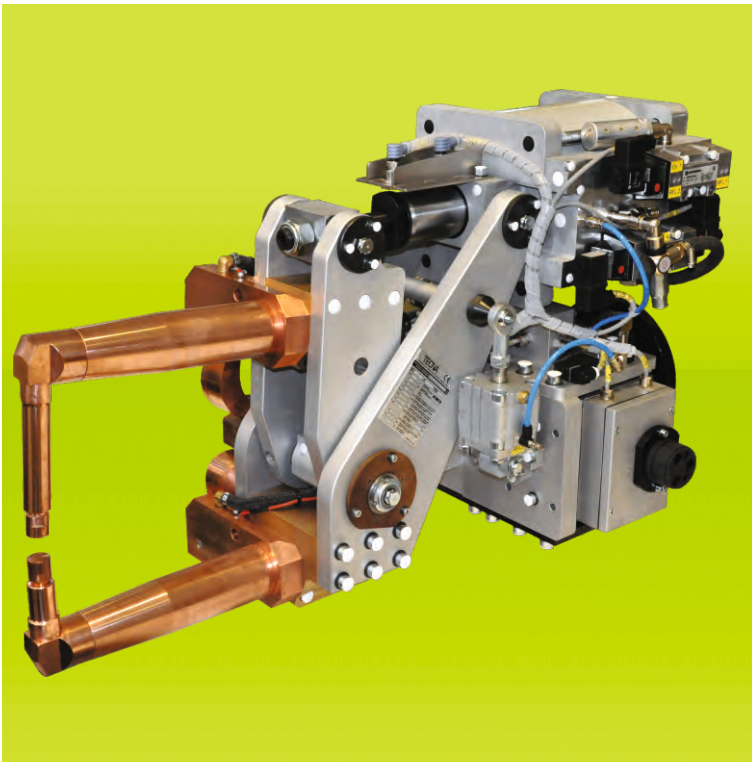


Peso | Weight | Gewicht

kg
49

L=mm	F=daN (6bar)
--	840

Ø100



2920

TRASFORMATORE DI POTENZA
POWER TRANSFORMERS
LEISTUNGSTRANSFORMATOREN

	POWER	*WEIGHT
MONOFASE SINGLE-PHASE EINPHASEN	32 kVA	21 kg
	36 kVA	23 kg
	54 kVA	32 kg
	60 kVA	35 kg
MEDIA FREQUENZA MEDIUM FREQUENCY MITTELFREQUENZ	56 kVA	16 kg
	90 kVA	29 kg

Il peso delle pinze è inteso senza bracci, senza polso di supporto e senza (*)trasformatore di potenza.

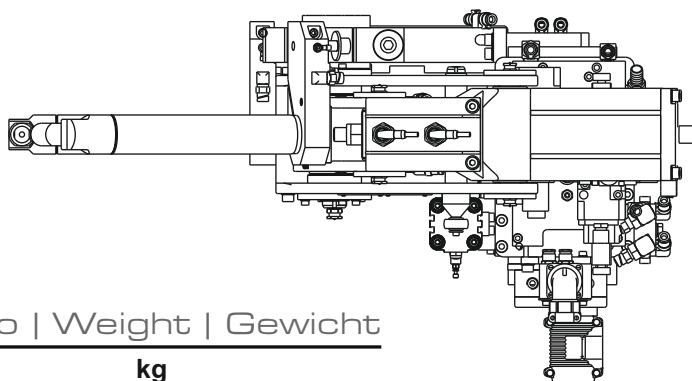
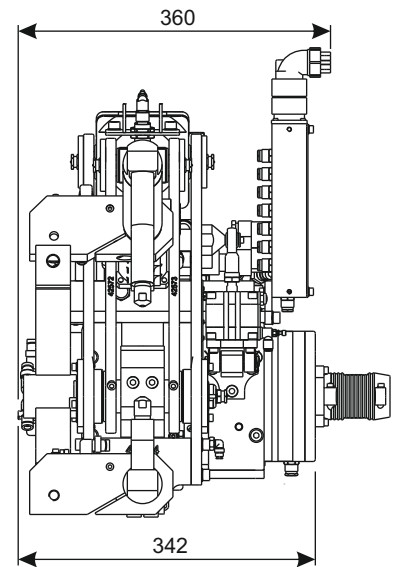
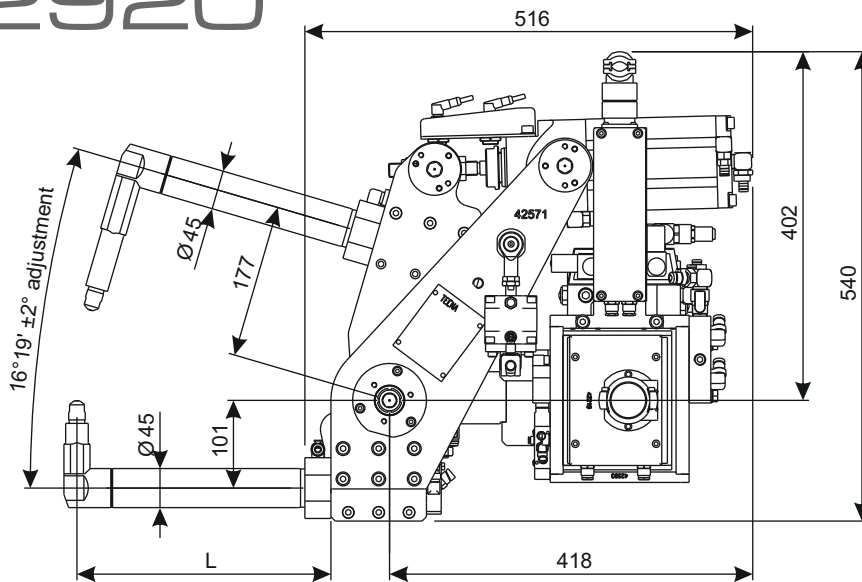
The weight of the guns is meant without arms, without arm fitting and without ()power transformer.*

Das Gewicht der Zangen ist ohne Arme, ohne Handgelenk und ohne (*)Leistungstransformator zu meinen.

Per i dati tecnici dei trasformatori vedi pagina 6.
For the technical features of the transformers, please, refer to page 6.

Technische Daten der Transformatoren finden Sie auf Seite 6.

2920



Ø100

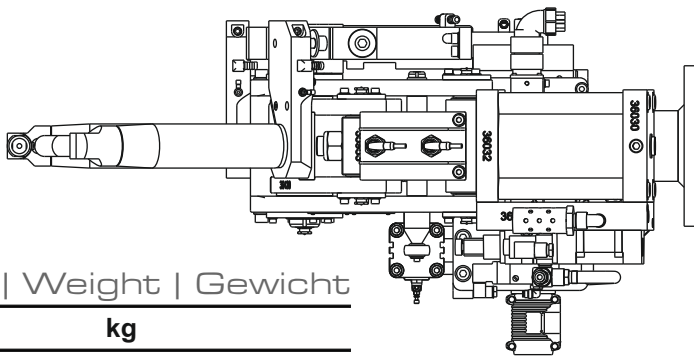
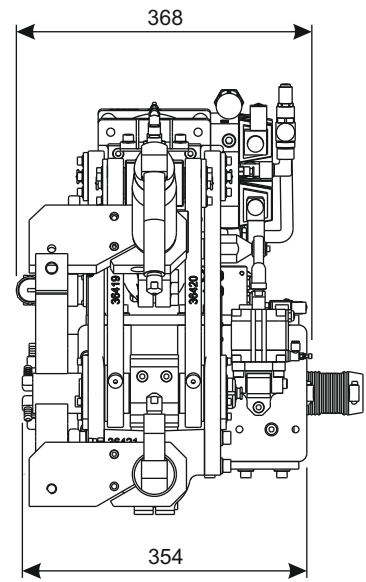
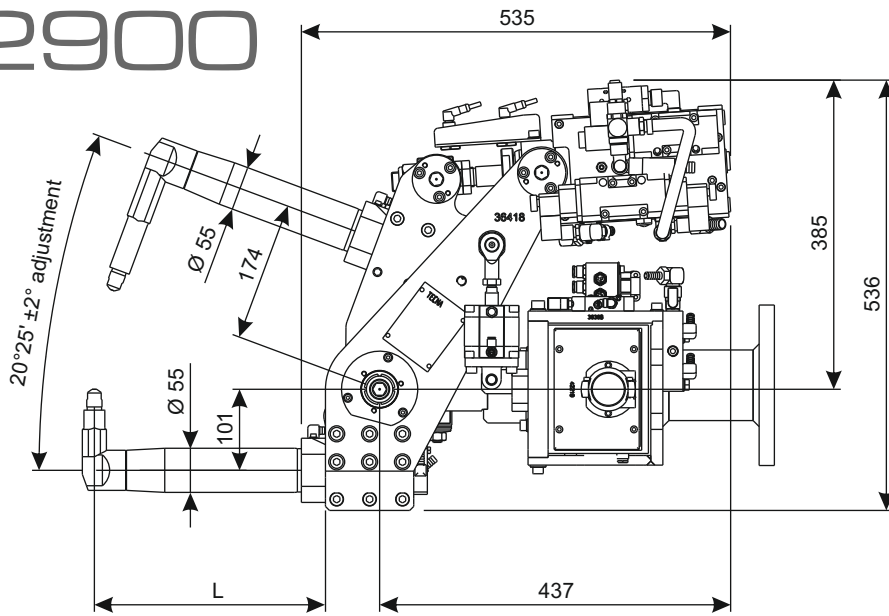
L=mm	F=daN (6bar)
300	319
350	284
400	255
450	232
500	212
600	182
700	159

Peso | Weight | Gewicht

kg

57

2900



Peso | Weight | Gewicht

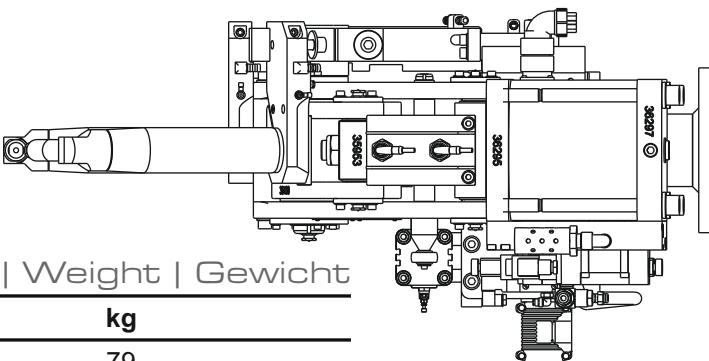
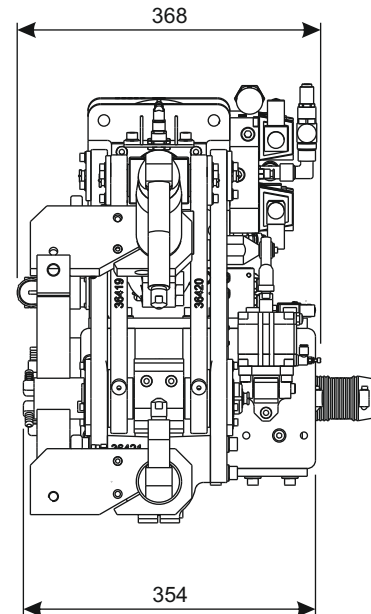
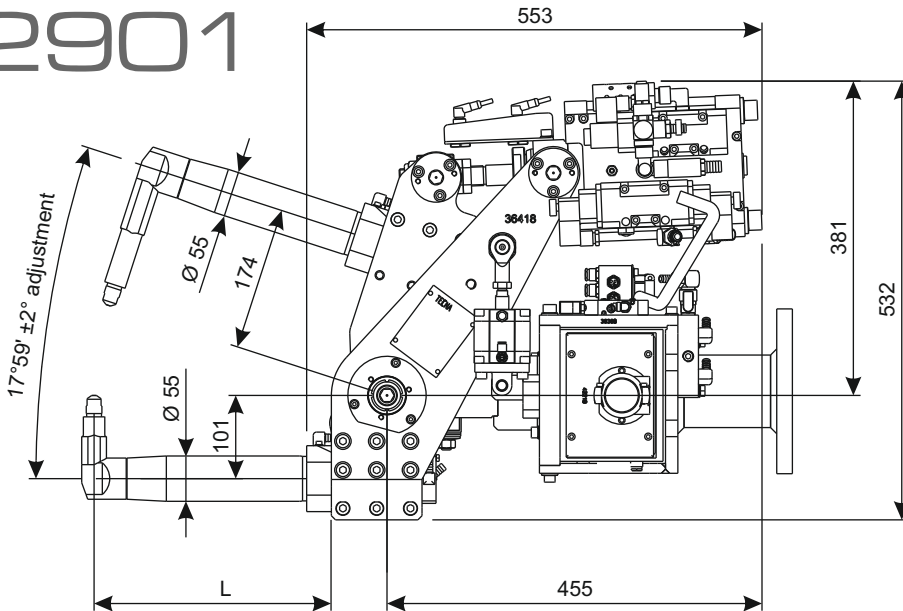
kg

73

Ø125

L=mm	F=daN (6bar)
300	500
350	444
400	399
450	363
500	333
600	285
700	249

2901



Peso | Weight | Gewicht

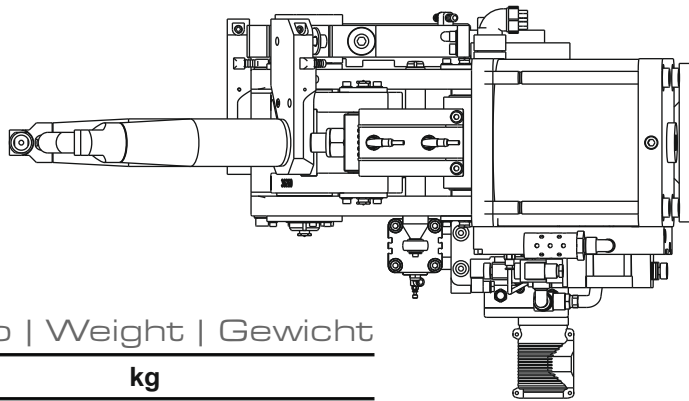
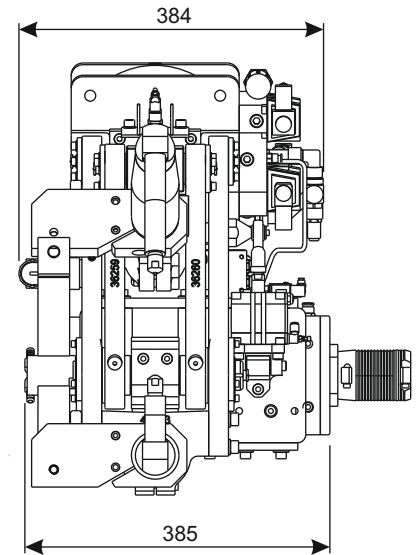
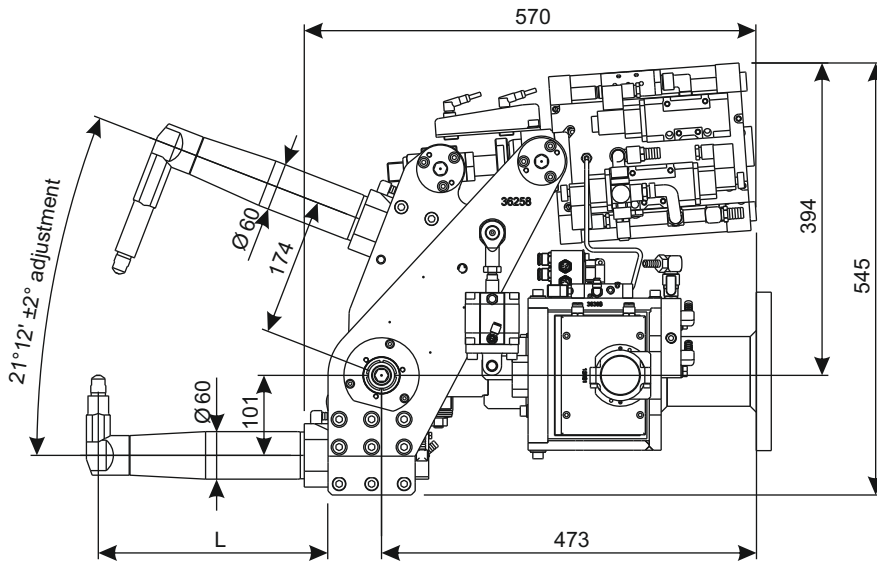
kg

79

Ø160

L=mm	F=daN (6bar)
300	819
350	728
400	655
450	595
500	545
600	467
700	409

2911



Ø200

Peso | Weight | Gewicht

kg
89

L=mm	F=daN (6bar)
300	1280
350	1137
400	1023
450	930
500	852
600	730
700	638

Dati tecnici trasformatori | Transformers technical data |
Technische Daten der Transformatoren

	kVA	I ₁ 100% 50% A	V ₂₀ Volt				I ₂ 100% kA
			1	2	3	4	
MONOFASE	32	56	5,6	-	-	-	4
SINGLE-PHASE	36	63	6,4	-	-	-	4
EINPHASEN	54	95	7,1	-	-	-	5,4
	60	106	8	-	-	-	5,4
	75	132	10	-	-	-	5,4
MEDIA FREQUENZA	56	39	8,4	-	-	-	4,4
MEDIUM FREQUENCY	90	63,6	9,9	-	-	-	6,1
MITTELFREQUENZ							

2916



Per i dati tecnici dei trasformatori vedi pagina 10.

For the technical features of the transformers, please, refer to page 10.

Technische Daten der Transformatoren finden Sie auf Seite 10.

TRASFORMATORE DI POTENZA
POWER TRANSFORMERS
LEISTUNGSTRANSFORMATOREN

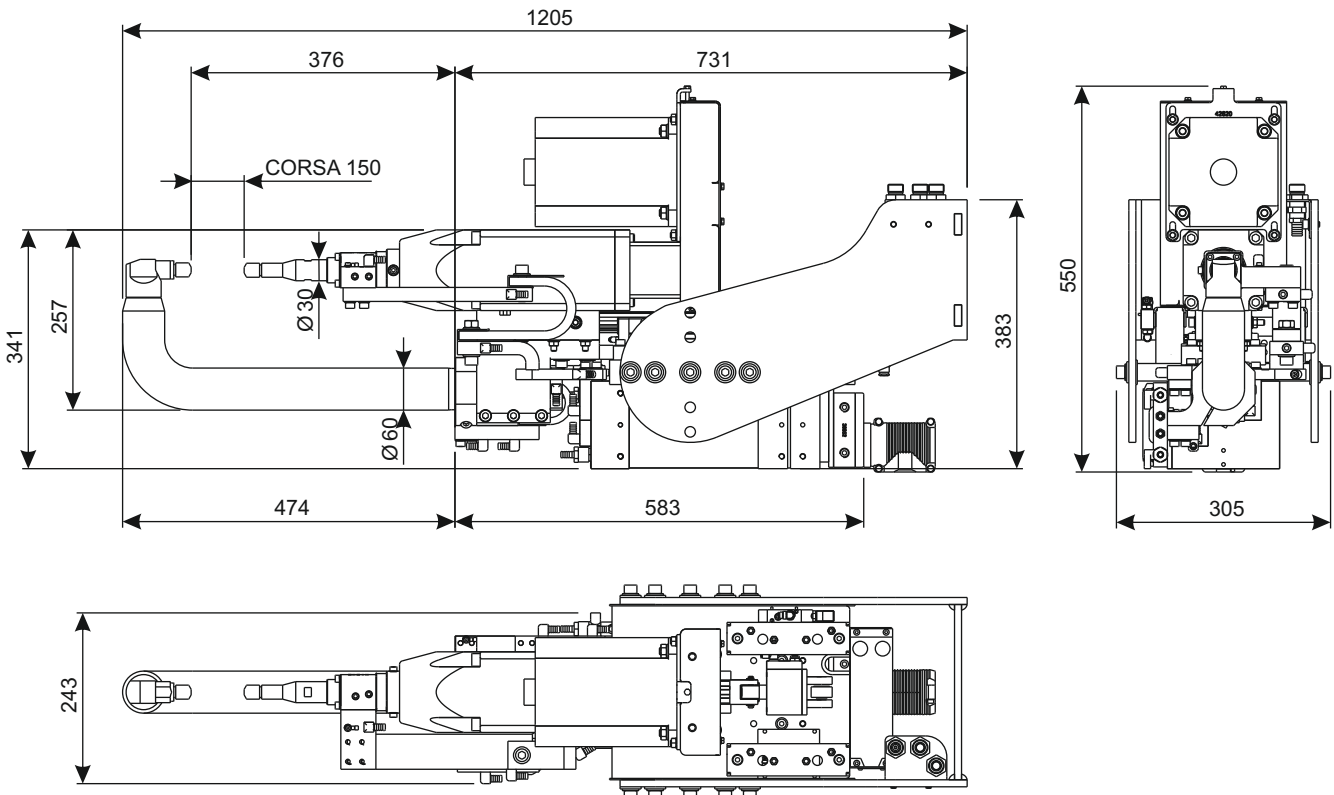
	POWER	*WEIGHT
	32 kVA	21 kg
MONOFASE	36 kVA	23 kg
SINGLE-PHASE	54 kVA	32 kg
EINPHASEN	60 kVA	35 kg
	75 kVA	41 kg
MEDIA FREQUENZA	56 kVA	16 kg
MEDIUM FREQUENCY	90 kVA	29 kg
MITTELFREQUENZ		

Il peso delle pinze è inteso senza bracci, senza polso di supporto, senza (*)trasformatore di potenza e senza attuatore elettrico.

The weight of the guns is meant without arms, without arm fitting, without (*)power transformer and without electric actuator.

Das Gewicht der Zangen ist ohne Arme, ohne Handgelenk, ohne (*)Leistungstransformator und elektrischen Aktuator zu meinen.

2916



Peso | Weight | Gewicht

kg
52

7Nm

L=mm	F=daN (7Nm)
--	880



Il peso delle pinze è inteso senza bracci, senza polso di supporto, senza (*)trasformatore di potenza e senza attuatore elettrico.

The weight of the guns is meant without arms, without arm fitting, without ()power transformer and without electric actuator.*

Das Gewicht der Zangen ist ohne Arme, ohne Handgelenk, ohne (*)Leistungstransformator und elektrischen Aktuator zu meinen.

2923

TRASFORMATORE DI POTENZA
POWER TRANSFORMERS
LEISTUNGSTRANSFORMATOREN

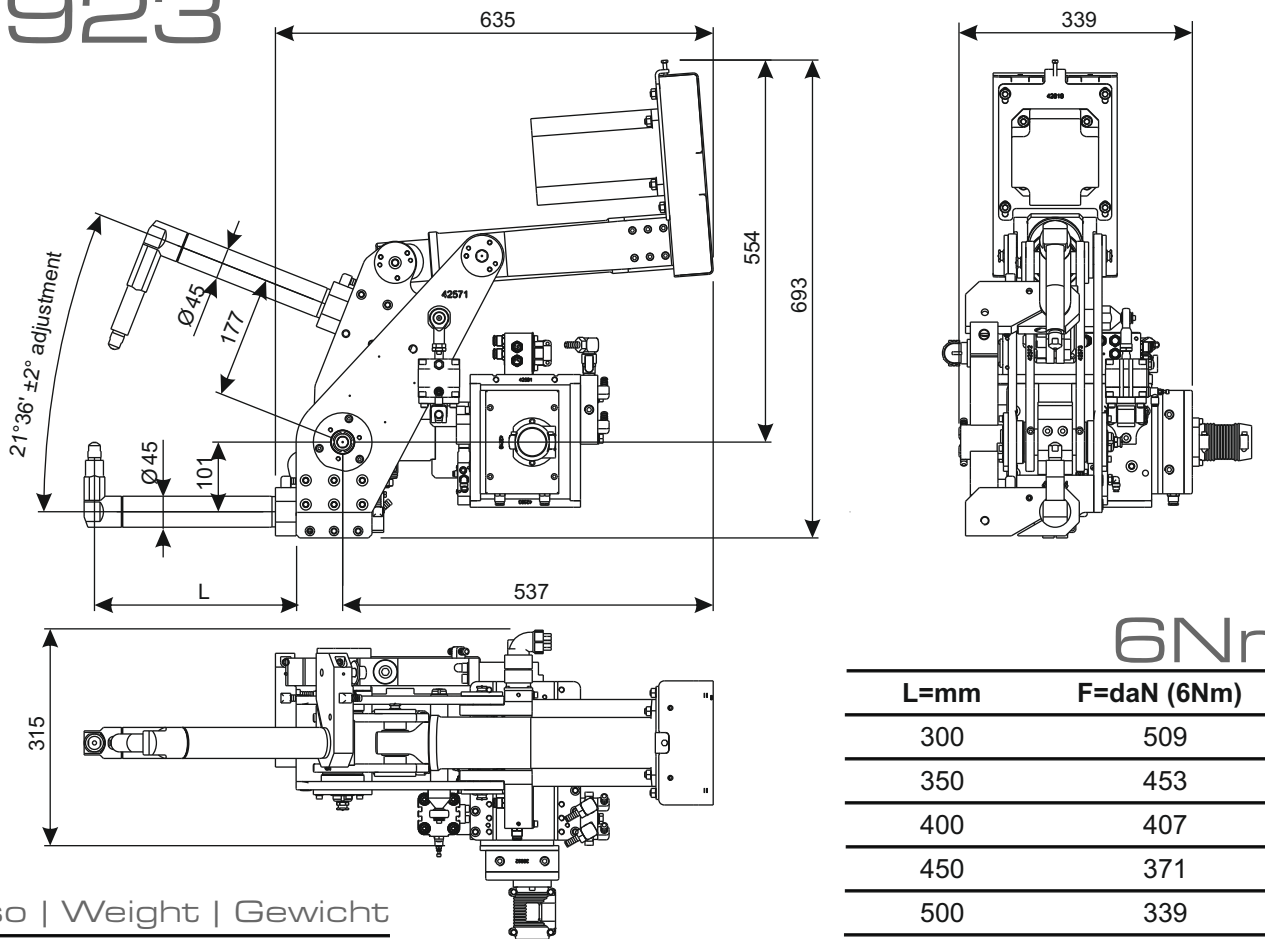
	POWER	*WEIGHT
	32 kVA	21 kg
MONOFASE	36 kVA	23 kg
SINGLE-PHASE	54 kVA	32 kg
EINPHASEN	60 kVA	35 kg
	75 kVA	41 kg
MEDIA FREQUENZA	56 kVA	16 kg
MEDIUM FREQUENCY	90 kVA	29 kg
MITTELFREQUENZ		

Per i dati tecnici dei trasformatori vedi pagina 10.

For the technical features of the transformers, please, refer to page 10.

Technische Daten der Transformatoren finden Sie auf Seite 10.

2923



6Nm

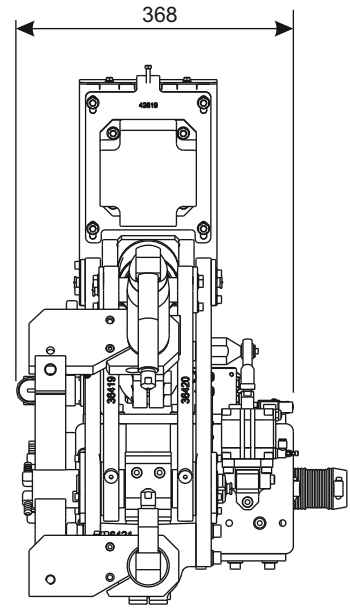
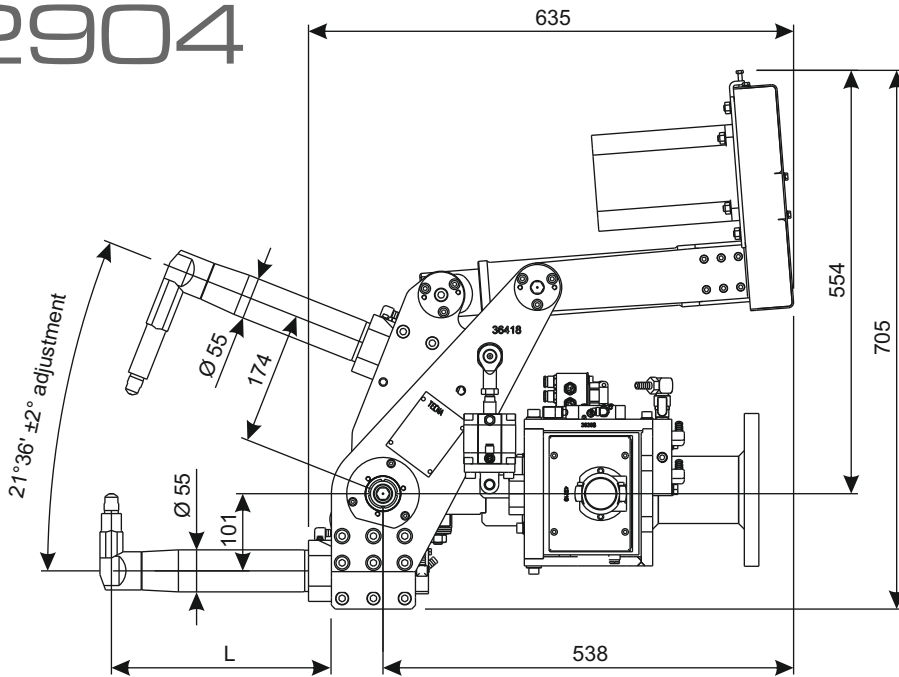
L=mm	F=daN (6Nm)
300	509
350	453
400	407
450	371
500	339
600	209
700	254

Peso | Weight | Gewicht

kg

44

2904



6Nm

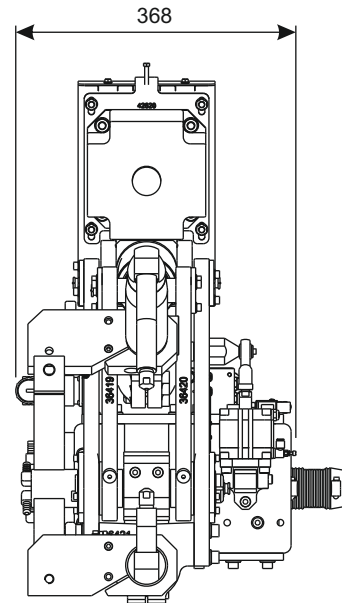
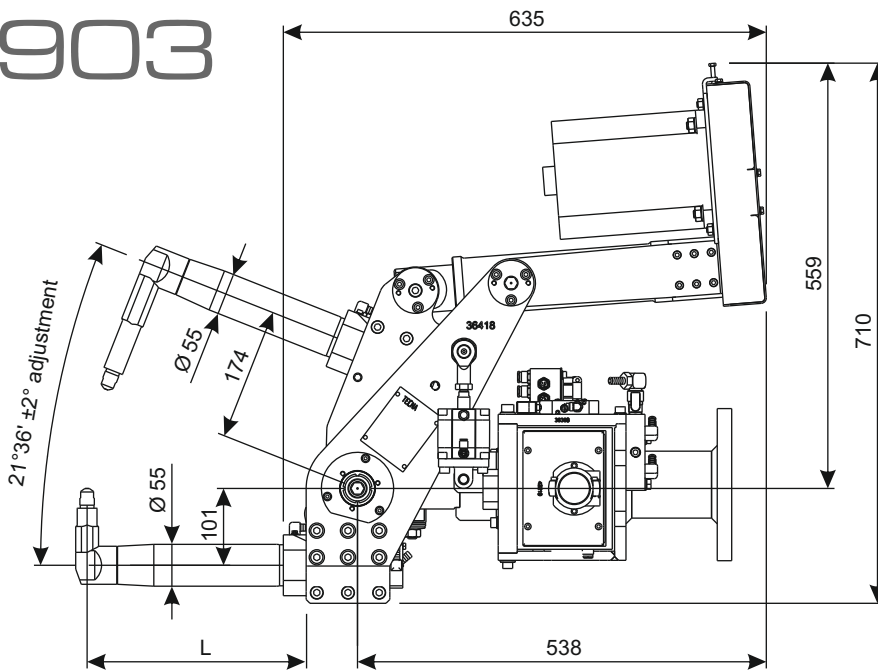
L=mm	F=daN (6Nm)
300	509
350	453
400	407
450	371
500	339
600	209
700	254

Peso | Weight | Gewicht

kg

58

2903



11Nm

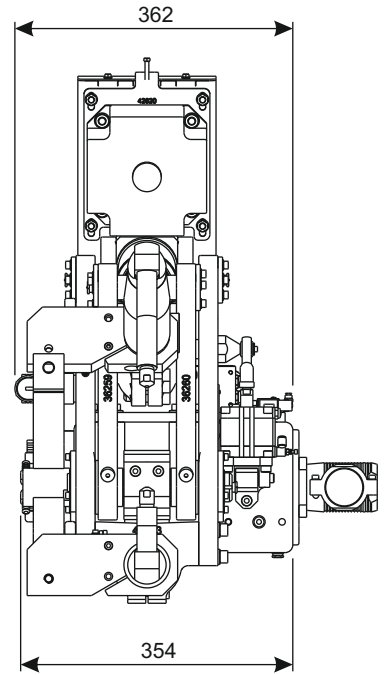
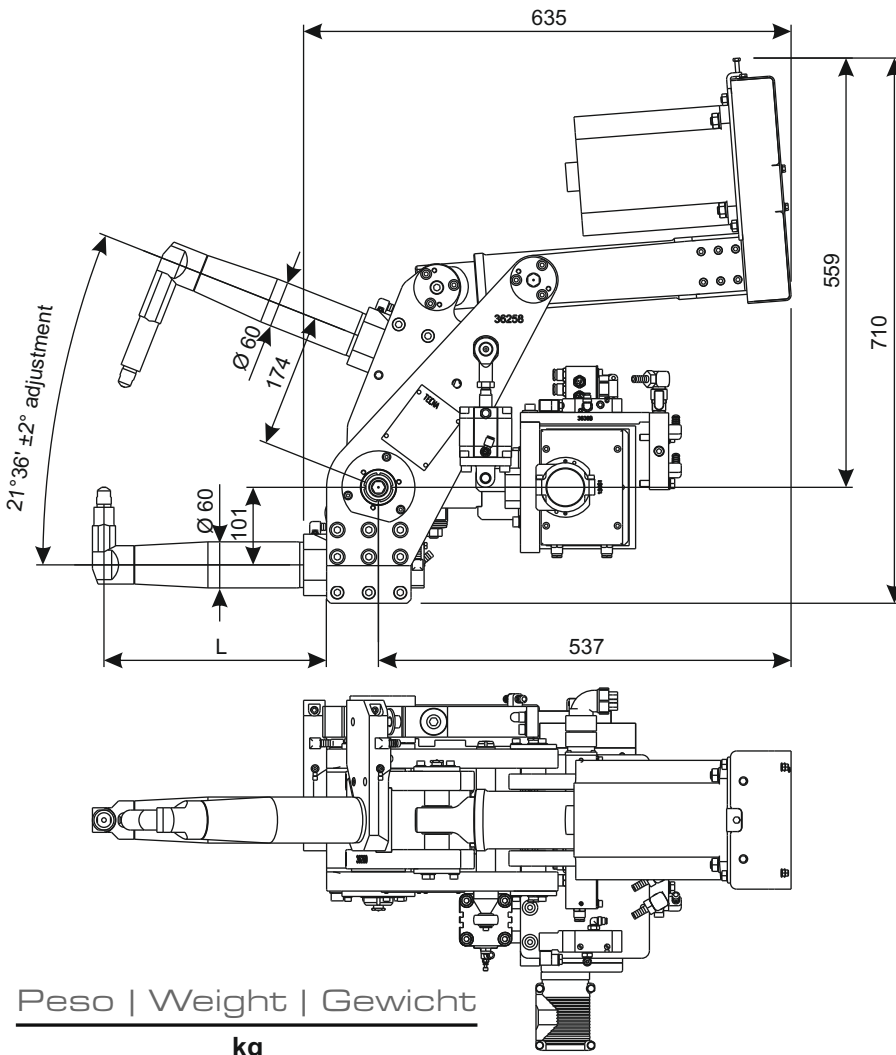
L=mm	F=daN (11Nm)
300	939
350	834
400	750
450	682
500	625
600	535
700	468

Peso | Weight | Gewicht

kg

56

2913



11 Nm

L=mm	F=daN (11Nm)
300	939
350	834
400	750
450	682
500	625
600	535
700	468

Peso | Weight | Gewicht

kg
61

Dati tecnici trasformatori | Transformers technical data |
Technische Daten der Transformatoren

	kVA	I ₁ 100% A	V ₂₀ Volt				I ₂ 100% kA
			1	2	3	4	
MONOFASE SINGLE-PHASE EINPHASEN	32	56	5,6	-	-	-	4
	36	63	6,4	-	-	-	4
	54	95	7,1	-	-	-	5,4
	60	106	8	-	-	-	5,4
	75	132	10	-	-	-	5,4
MEDIA FREQUENZA MEDIUM FREQUENCY MITTELFREQUENZ	56	39	8,4	-	-	-	4,4
	90	63,6	9,9	-	-	-	6,1

TECNA[®]

La TECNA si riserva il diritto di variare senza preavviso alcuno, i propri prodotti. - Specifications subject to change without notice. - Technische Änderungen vorbehalten.

TECNA S.p.A. | Via Meucci, 27 | 40024 | Castel S. Pietro Terme | Bologna (Italy)
Ph. +39.051.6954411 | Fax +39.051.6454490
<http://www.tecna.net> | E-mail: sales@tecna.net | vendite@tecna.net